

# LED Area Light

LOT-AL-40-2/ LOT-AL-60-2  
LOT-AL-80-2/ LOT-AL-100-2

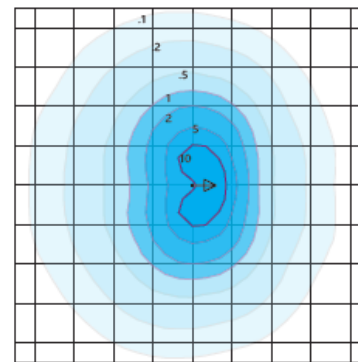


# LED Pole Light

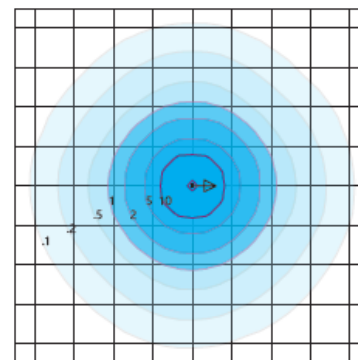
LOT-AL-40-2/ LOT-AL-60-2  
LOT-AL-80-2/ LOT-AL-100-2

<b>Product Number</b>	LOT-AL-40-2/ LOT-AL-60-2/ LOT-AL-80-2/ LOT-AL-100-2
<b>Lumen Output</b>	4,620 - 6,820 - 9,020 - 11,220
<b>Wattage</b>	40W - 60W - 80W - 100W
<b>Lumen Efficacy</b>	>110
<b>CCT</b>	3000K - 4000K - 5000K
<b>Beam Angle</b>	T2VS = Type II Very Short T5VS = Type V Very Short
<b>Input Voltage</b>	UNV = Universal 120-277 VAC HV = 347 VAC & 480 VAC
<b>IP Rating</b>	IP65
<b>LED Driver</b>	UL/CUL Listed Constant Current
<b>Certification</b>	ETL, FCC, IES, DLC, LEDLF, RoHS, IDA

## DISTRIBUTION



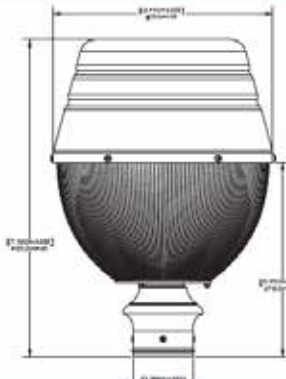
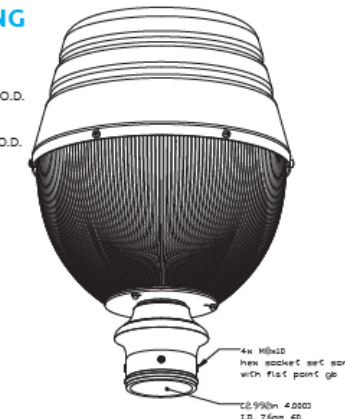
**Type II Very Short - T2VS**  
Duke Light  
LED-PT-121-P-T2VS-100-850-UNV  
Horizontal Footcandles  
Scale: 1 Mesh = 10 Ft.  
Light Loss Factor = 1.00  
Total Lamp Lumens = 13265.93  
MH = 10.00 Ft, Tilt = 0 Degrees  
Maximum Calculated Value = 17.91 Fc  
Arrangement: Single  
Horizontal Beam Angle (50%): 135.3°  
Vertical Beam Angle (50%): 85.5°



**Type V Very Short - T5VS (Standard)**  
Duke Light  
LED-PT-121-P-T5VS-100-850-UNV  
Horizontal Footcandles  
Scale: 1 Mesh = 10 Ft.  
Light Loss Factor = 1.00  
Total Lamp Lumens = 13267.91  
MH = 10.00 Ft, Tilt = 0 Degrees  
Maximum Calculated Value = 15.07 Fc  
Arrangement: Single  
Horizontal Beam Angle (50%): 130.8°  
Vertical Beam Angle (50%): 132.7°

## MOUNTING

**Pole Mounted**  
2.875 inch (73 mm)  
Max. Diameter Pole O.D.  
2.375 inch (60 mm)  
Min. Diameter Pole O.D.



# Product Description

This LED Pole light series, LOT-AL-40-2, is an excellent light for both commercial and residential properties. Designed for superior photometric performance and architectural appeal, this light comes equipped with a rated LED chip and advanced optical system providing stable color consistency, energy efficiency, reduced glare, and excellent light quality. IP65 rated housing provides excellent strength and durability for multiple weather conditions. This series has a lifespan of over 50,000 hours and a 5-year manufacturer warranty.



[www.LightingofTomorrow.com](http://www.LightingofTomorrow.com)  
1-800-538-4446