

LED Area Light

LOT-AL-40-10/ LOT-AL-60-10

LOT-AL-80-10/ LOT-AL-100-10

LOT-AL-120-10/ LOT-AL-150-10



LED Area Light Fixture

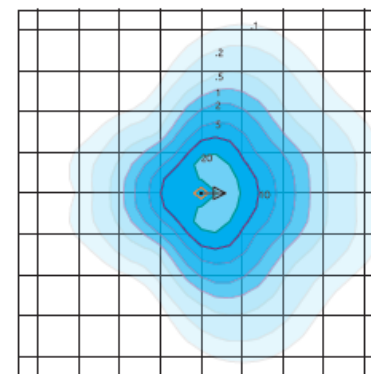
LOT-AL-40-10/ LOT-AL-60-10

LOT-AL-80-10/ LOT-AL-100-10

LOT-AL-120-10/ LOT-AL-150-10

Product Number	LOT-AL-40-10/ LOT-AL-60-10/ LOT-AL-80-10 LOT-AL-100-10/ LOT-AL-120-10/ LOT-AL-150-10
Lumen Output	4,620 - 6,820 - 9,020 - 11,220 - 13,420 - 16,720
Wattage	40W - 60W - 80W - 100W - 120W - 150 W
Lumen Efficacy	>110
CCT	3000K - 4000K - 5000K
Beam Angle	T2VS = Type II Very Short T3VS = Type III Very Short T5VS = Type V Very Short
Input Voltage	UNV = Universal 120-277 VAC HV = 347 VAC & 480 VAC
IP Rating	IP65
LED Driver	UL/CUL Listed Constant Current
Certification	ETL, FCC, IES, DLC, LEDLF, RoHS, IDA

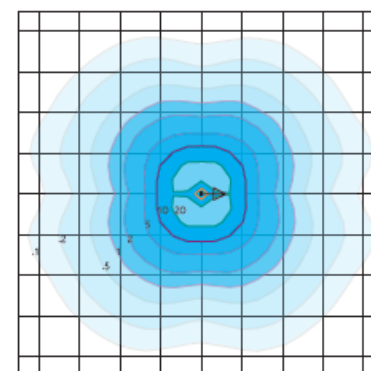
DISTRIBUTION



Type III Short - T3S

Duke Light
LED-PT-632-P-T3S-150-850-UNV

Horizontal Footcandles
Scale: 1 Mesh = 10 Ft.
Light Loss Factor = 1.00
Total Lamp Lumens = 19769.17
MH = 10.00 Ft, Tilt = 0 Degrees
Maximum Calculated Value = 30.27 Fc
Arrangement: Single
Horizontal Beam Angle (50%): 125.5°
Vertical Beam Angle (50%): 72.7°



Type V Very Short - T5VS
(Standard)

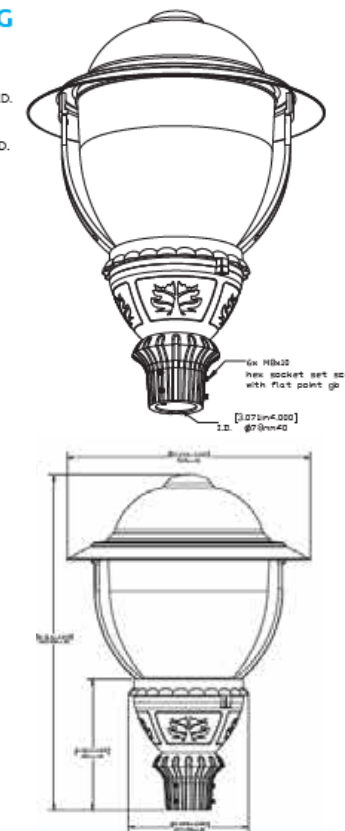
Duke Light
LED-PT-632-P-T5VS-150-850-UNV

Horizontal Footcandles
Scale: 1 Mesh = 10 Ft.
Light Loss Factor = 1.00
Total Lamp Lumens = 19769.35
MH = 10.00 Ft, Tilt = 0 Degrees
Maximum Calculated Value = 27.17 Fc
Arrangement: Single
Horizontal Beam Angle (50%): 115.4°
Vertical Beam Angle (50%): 122.7°

MOUNTING

Pole Mounted

3.00 inch (76 mm)
Max. Diameter Pole O.D.
2.375 inch (60 mm)
Min. Diameter Pole O.D.



Product Description

The LOT-AL-40-10 series is an energy efficient lighting option for neighborhoods, commercial walking areas, public gardens, and outdoor malls. This area light fixture offers excellent light quality, durable IP65 rated waterproof housing, with UL Listed Class I drivers. The high-temperature-resistant, high-borosilicate glass optical lens provides long-term high transmittance. Optional sensors available such as motion sensor and dimmer. This light comes with a 5-year manufacturer warranty and has a lifetime of over 50,000 hours.



www.LightingofTomorrow.com
1-800-538-4446