

LED Area Light

LOT-AL-40-12/ LOT-AL-60-12

LOT-AL-80-12/ LOT-AL-100-12

LOT-AL-120-12/ LOT-AL-150-12



LED Post Light

LOT-AL-40-12/ LOT-AL-60-12

LOT-AL-80-12/ LOT-AL-100-12

LOT-AL-120-12/ LOT-AL-150-12

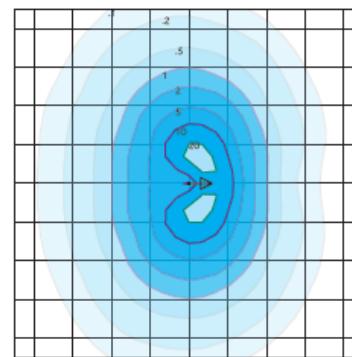
Product Number	LOT-AL-40-12/ LOT-AL-60-12/ LOT-AL-80-12 LOT-AL-100-12/ LOT-AL-120-12/ LOT-AL-150-12
Lumen Output	4,620 - 6,820 - 9,020 - 11,220 - 13,420 - 16,720
Wattage	40W - 60W - 80W - 100W - 120W - 150 W
Lumen Efficacy	>110
CCT	3000K - 4000K - 5000K
Beam Angle	T2VS = Type II Very Short T5VS = Type V Very Short
Input Voltage	UNV = Universal 120-277 VAC HV = 347 VAC & 480 VAC
IP Rating	IP65
LED Driver	UL/CUL Listed Constant Current
Certification	ETL, FCC, IES, DLC, LEDLF, RoHS, IDA

Product Description

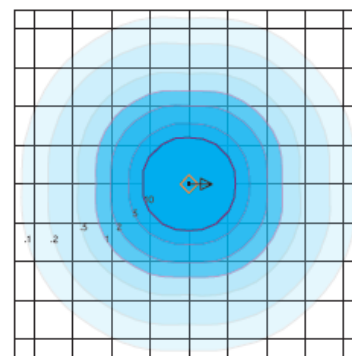
The LOT-AL-40-12 series is often used to replace halogen style lights in residential communities, commercial plazas, city centers, university campuses, and public gardens. This LED Post light comes with an outdoor-rated LED chip, providing stable color consistency, and the built-in heat sink provides heat management, allowing for a lifespan of over 50,000 hours. Waterproof with die-cast aluminum housing, this LED Decorative Area Light is built for durability. Optional features such as daylight sensor controls are also available.



DISTRIBUTION



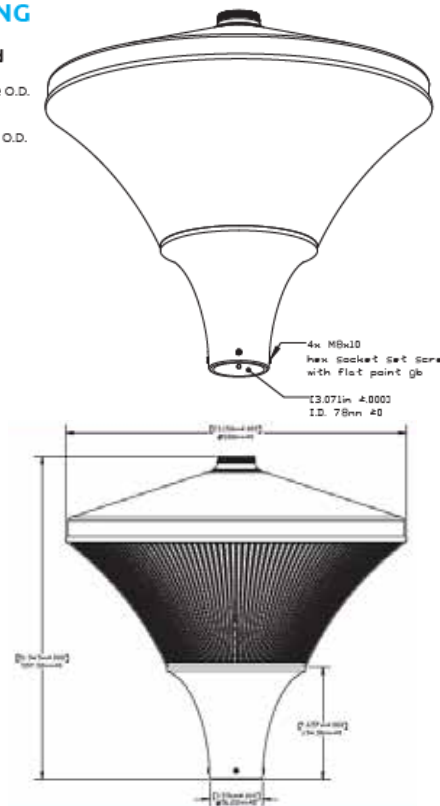
Type II Short - T2S
 Duke Light
 LED-PT-641-P-T2S-150-850-UNV
 Horizontal Footcandles
 Scale: 1 Mesh = 10 Ft.
 Light Loss Factor = 1.00
 Total Lamp Lumens = 19767.7
 MH = 10.00 Ft, Tilt = 0 Degrees
 Maximum Calculated Value = 25.10 Fc
 Arrangement: Single
 Horizontal Beam Angle (50%): 138.1°
 Vertical Beam Angle (50%): 95.5°



Type V Very Short - T5VS (Standard)
 Duke Light
 LED-PT-641-P-T5VS-150-850-UNV
 Horizontal Footcandles
 Scale: 1 Mesh = 10 Ft.
 Light Loss Factor = 1.00
 Total Lamp Lumens = 19766.93
 MH = 10.00 Ft, Tilt = 0 Degrees
 Maximum Calculated Value = 19.69 Fc
 Arrangement: Single
 Horizontal Beam Angle (50%): 122.5°
 Vertical Beam Angle (50%): 129.9°

MOUNTING

Pole Mounted
 3.00 inch (76 mm)
 Max. Diameter Pole O.D.
 2.375 inch (60 mm)
 Min. Diameter Pole O.D.



www.LightingofTomorrow.com
 1-800-538-4446

