

LED Area Light

LOT-AL-40-14/ LOT-AL-60-14

LOT-AL-80-14/ LOT-AL-100-14

LOT-AL-120-14/ LOT-AL-150-14



LED Decorative Pole Fixture

LOT-AL-40-14/ LOT-AL-60-14

LOT-AL-80-14/ LOT-AL-100-14

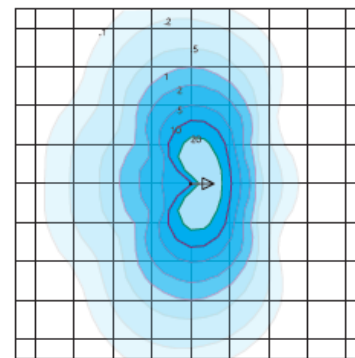
LOT-AL-120-14/ LOT-AL-150-14

Product Number	LOT-AL-40-14/ LOT-AL-60-14/ LOT-AL-80-14 LOT-AL-100-14/ LOT-AL-120-14/ LOT-AL-150-14
Lumen Output	4,620 - 6,820 - 9,020 - 11,220 - 13,420 - 16,720
Wattage	40W - 60W - 80W - 100W - 120W - 150 W
Lumen Efficacy	>110
CCT	3000K - 4000K - 5000K
Beam Angle	T2VS = Type II Very Short T5VS = Type V Very Short
Input Voltage	UNV = Universal 120-277 VAC HV = 347 VAC & 480 VAC
IP Rating	IP65
LED Driver	UL/CUL Listed Constant Current
Certification	ETL, FCC, IES, DLC, LEDLF, RoHS, IDA

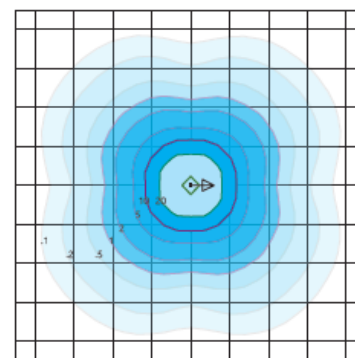
Product Description

The LOT-AL-40-14 series is a fantastic LED outdoor lighting choice for parking lots, retail properties, and community associations. This light offers excellent energy efficiency and light quality with reduced glare. The optical glass lens technology effectively aims the light where you need it, while eliminating the unsightly shadow circles commonly seen under other LED post top fixtures. This decorative pole fixture has an enduring powder coated finish which provides long-term protection against ultraviolet light and chipping. Motion sensor and dimming options available.

DISTRIBUTION



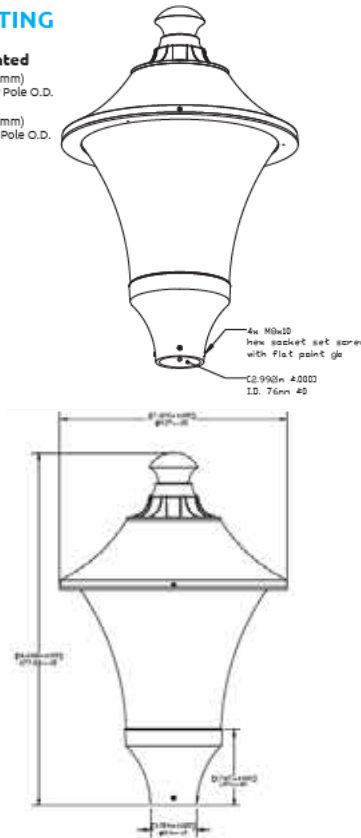
Type II Short - T2S
 Duke Light
 LED-PT-643-P-T2S-150-850-UNV
 Horizontal Footcandles
 Scale: 1 Mesh = 10 Ft.
 Light Loss Factor = 1.00
 Total Lamp Lumens = 19769.5
 MH = 10.00 Ft. Tilt = 0 Degrees
 Maximum Calculated Value = 37.12 Fc
 Arrangement: Single
 Horizontal Beam Angle (50%): 136.1°
 Vertical Beam Angle (50%): 79.7°



Type V Very Short - T5VS (Standard)
 Duke Light
 LED-PT-643-P-T5VS-150-850-UNV
 Horizontal Footcandles
 Scale: 1 Mesh = 10 Ft.
 Light Loss Factor = 1.00
 Total Lamp Lumens = 19769.91
 MH = 10.00 Ft. Tilt = 0 Degrees
 Maximum Calculated Value = 30.82 Fc
 Arrangement: Single
 Horizontal Beam Angle (50%): 115.8°
 Vertical Beam Angle (50%): 123.1°

MOUNTING

Pole Mounted
 2.875 inch (73 mm)
 Max. Diameter Pole O.D.
 2.375 inch (60 mm)
 Min. Diameter Pole O.D.



www.LightingofTomorrow.com
 1-800-538-4446

