

# LED Area Light

LOT-AL-40-16/ LOT-AL-60-16

LOT-AL-80-16/ LOT-AL-100-16

LOT-AL-120-16



# LED Decorative Post Light

LOT-AL-40-16/ LOT-AL-60-16

LOT-AL-80-16/ LOT-AL-100-16

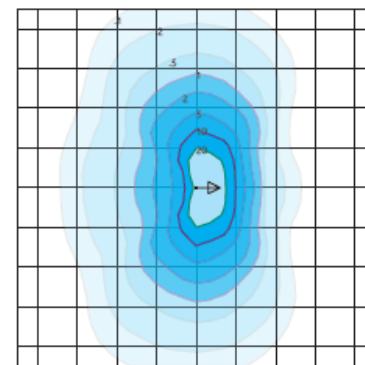
LOT-AL-120-16

Product Number	LOT-AL-40-16/ LOT-AL-60-16/ LOT-AL-80-16 LOT-AL-100-16/ LOT-AL-120-16
Lumen Output	4,620 - 6,820 - 9,020 - 11,220 - 13,420
Wattage	40W - 60W - 80W - 100W - 120W
Lumen Efficacy	>110
CCT	3000K - 4000K - 5000K
Beam Angle	T2VS = Type II Very Short T5VS = Type V Very Short
Input Voltage	UNV = Universal 120-277 VAC HV = 347 VAC & 480 VAC
IP Rating	IP65
LED Driver	UL/CUL Listed Constant Current
Certification	ETL, FCC, IES, DLC, LEDLF, RoHS, IDA

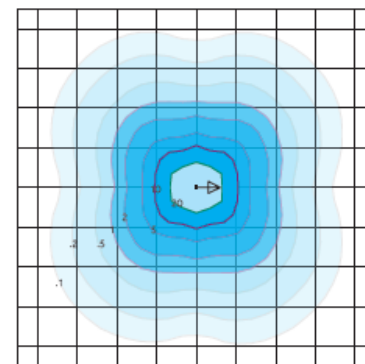
# Product Description

The LOT-AL-40-16 series replaces halogen style lights in outdoor shopping areas, residential communities, university campuses, and public gardens. The die-cast aluminum housing is IP65 rated for excellent durability and strength. The waterproof housing has proven effective for various weather conditions while the powder-coated finish provides long-term protection against ultraviolet light and chipping. This post light has an advanced LED optical system provides horizontal and vertical uniformity, reducing glare while providing excellent lighting control.

## DISTRIBUTION



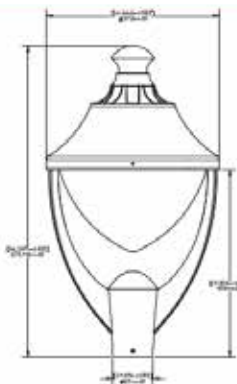
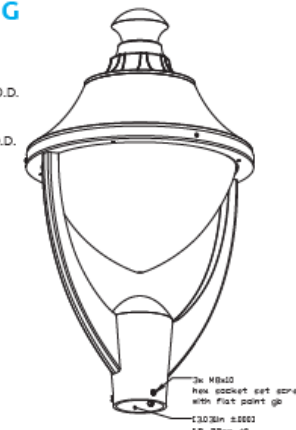
Type II Short - T2S  
Duke Light  
LED-PT-720-P-T2S-120-850-UNV  
Horizontal Footcandles  
Scale: 1 Mesh = 10 Ft.  
Light Loss Factor = 1.00  
Total Lamp Lumens = 15867.93  
MH = 10.00 Ft, Tilt = 0 Degrees  
Maximum Calculated Value= 33.67 Fc  
Arrangement: Single  
Horizontal Beam Angle (50%): 141.2°  
Vertical Beam Angle (50%): 81.5°



Type V Very Short - T5VS (Standard)  
Duke Light  
LED-PT-720-P-T5VS-120-850-UNV  
Horizontal Footcandles  
Scale: 1 Mesh = 10 Ft.  
Light Loss Factor = 1.00  
Total Lamp Lumens = 15868.9  
MH = 10.00 Ft, Tilt = 0 Degrees  
Maximum Calculated Value= 25.73 Fc  
Arrangement: Single  
Horizontal Beam Angle (50%): 103.9°  
Vertical Beam Angle (50%): 123.2°

## MOUNTING

**Pole Mounted**  
2.875 inch (73 mm)  
Max. Diameter Pole O.D.  
2.375 inch (60 mm)  
Min. Diameter Pole O.D.



www.LightingofTomorrow.com  
1-800-538-4446