

LED Area Light

LOT-AL-40-17/ LOT-AL-60-17

LOT-AL-80-17/ LOT-AL-100-17

LOT-AL-120-17



LED Area Post Fixture

LOT-AL-40-17/ LOT-AL-60-17

LOT-AL-80-17/ LOT-AL-100-17

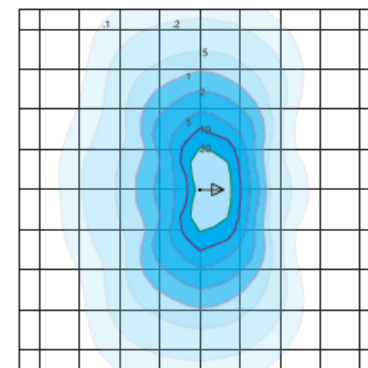
LOT-AL-120-17

Product Number	LOT-AL-40-17/ LOT-AL-60-17/ LOT-AL-80-17 LOT-AL-100-17/ LOT-AL-120-17
Lumen Output	5,460 - 8,060 - 10,660 - 13,260 - 15,860
Wattage	40W - 60W - 80W - 100W - 120W
Lumen Efficacy	>130
CCT	3000K - 4000K - 5000K
Beam Angle	T2VS = Type II Very Short T5VS = Type V Very Short
Input Voltage	UNV = Universal 120-277 VAC HV = 347 VAC & 480 VAC
IP Rating	IP65
LED Driver	UL/CUL Listed Constant Current
Certification	ETL, FCC, IES, DLC, LEDLF, RoHS, IDA

Product Description

The LOT-AL-40-17 series is often used to replace halogen style lights in residential communities, commercial plazas, city centers, university campuses, and public gardens. The product comes with an outdoor-rated LED chip, providing stable color consistency, and the built-in heat sink provides heat management, allowing for a lifespan of over 50,000 hours. Waterproof with die-cast aluminum housing, this area post fixture is built for durability. Optional features such as daylight sensor controls are also available.

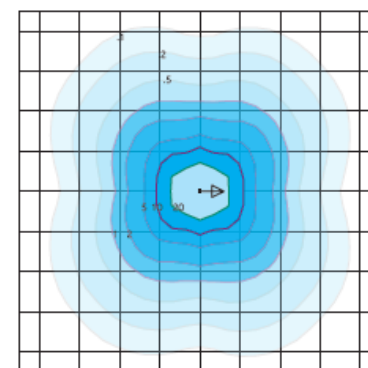
DISTRIBUTION



Type II Short - T2S

Duke Light
LED-PT-721-P-T2S-120-850-UNV

Horizontal Footcandles
Scale: 1 Mesh = 10 Ft.
Light Loss Factor = 1.00
Total Lamp Lumens = 15868.89
MH = 10.00 Ft, Tilt = 0 Degrees
Maximum Calculated Value = 36.71 Fc
Arrangement: Single
Horizontal Beam Angle (50%): 133.1°
Vertical Beam Angle (50%): 60.8°



Type V Very Short - T5VS
(Standard)

Duke Light
LED-PT-721-P-T5VS-120-850-UNV

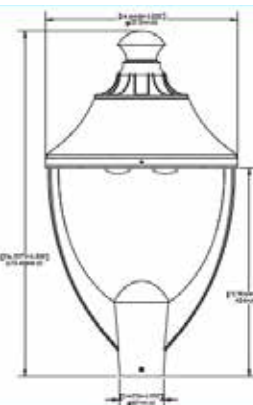
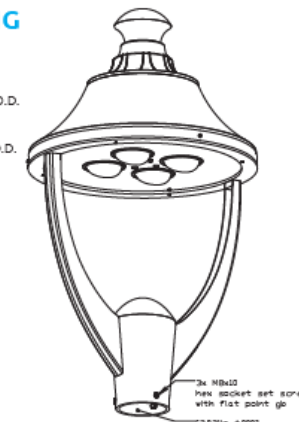
Horizontal Footcandles
Scale: 1 Mesh = 10 Ft.
Light Loss Factor = 1.00
Total Lamp Lumens = 15868.89
MH = 10.00 Ft, Tilt = 0 Degrees
Maximum Calculated Value = 28.14 Fc
Arrangement: Single
Horizontal Beam Angle (50%): 104.4°
Vertical Beam Angle (50%): 123.3°

MOUNTING

Pole Mounted

2.875 inch (73 mm)
Max. Diameter Pole O.D.

2.375 inch (60 mm)
Min. Diameter Pole O.D.



www.LightingofTomorrow.com

1-800-538-4446

