

LED Area Light

LOT-AL-40-19/ LOT-AL-60-19

LOT-AL-80-19/ LOT-AL-100-19

LOT-AL-120-19/ LOT-AL-150-19



LED Post Light Fixture

LOT-AL-40-19/ LOT-AL-60-19

LOT-AL-80-19/ LOT-AL-100-19

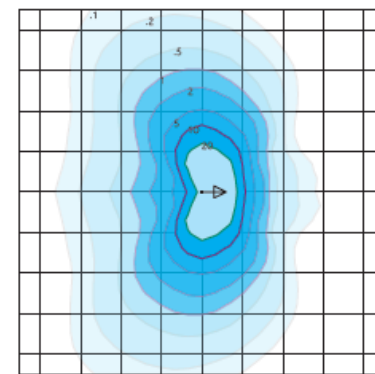
LOT-AL-120-19/ LOT-AL-150-19

Product Number	LOT-AL-40-19/ LOT-AL-60-19/ LOT-AL-80-19 LOT-AL-100-19/ LOT-AL-120-19/ LOT-AL-150-19
Lumen Output	5,460 - 8,060 - 10,660 - 13,260 - 15,860 - 19,760
Wattage	40W - 60W - 80W - 100W - 120W - 150W
Lumen Efficacy	>130
CCT	3000K - 4000K - 5000K
Beam Angle	T2VS = Type II Very Short T5VS = Type V Very Short
Input Voltage	UNV = Universal 120-277 VAC HV = 347 VAC & 480 VAC
IP Rating	IP65
LED Driver	UL/CUL Listed Constant Current
Certification	ETL, FCC, IES, DLC, LEDLF, RoHS, IDA

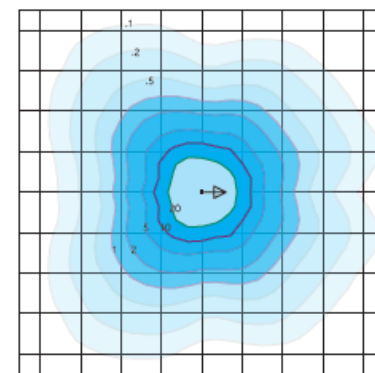
Product Description

The LOT-AL-40-19 series is a fantastic LED outdoor lighting choice for parking lots, retail properties, and community associations. This post light fixture offers excellent energy efficiency and light quality with reduced glare. The optical glass lens technology effectively aims the light where you need it, while eliminating the unsightly shadow circles commonly seen under other LED post top fixtures. An enduring powder coated finish provides long-term protection against ultraviolet light and chipping. Motion sensor and dimming options available.

DISTRIBUTION



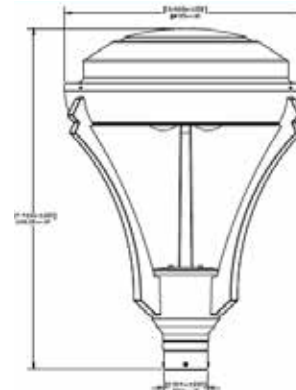
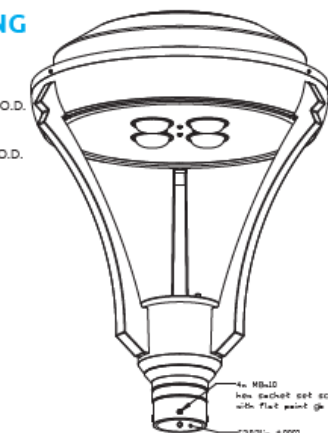
Type II Short - T2S
Duke Light
LED-PT-723-P-T2S-150-850-UNV
Horizontal Footcandles
Scale: 1 Mesh = 10 Ft.
Light Loss Factor = 1.00
Total Lamp Lumens = 19769.89
MH = 10.00 Ft, Tilt = 0 Degrees
Maximum Calculated Value= 45.00 Fc
Arrangement: Single
Horizontal Beam Angle (50%): 140.2°
Vertical Beam Angle (50%): 90.1°



Type V Very Short - T5VS
(Standard)
Duke Light
LED-PT-723-P-T5VS-150-850-UNV
Horizontal Footcandles
Scale: 1 Mesh = 10 Ft.
Light Loss Factor = 1.00
Total Lamp Lumens = 19769.57
MH = 10.00 Ft, Tilt = 0 Degrees
Maximum Calculated Value= 35.72 Fc
Arrangement: Single
Horizontal Beam Angle (50%): 115.8°
Vertical Beam Angle (50%): 120.3°

MOUNTING

Pole Mounted
2.875 inch (73 mm)
Max. Diameter Pole O.D.
2.375 inch (60 mm)
Min. Diameter Pole O.D.



www.LightingofTomorrow.com
1-800-538-4446