

# LED Area Light

LOT-AL-40-21/LOT-AL-60-21

LOT-AL-80-21/ LOT-AL-100-21



# LED Area Post Light

LOT-AL-40-21/LOT-AL-60-21

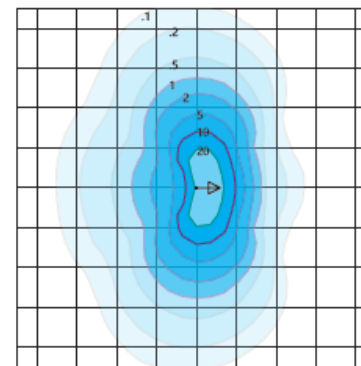
LOT-AL-80-21/ LOT-AL-100-21

<b>Product Number</b>	LOT-AL-40-21/LOT-AL-60-21/LOT-AL-80-21/LOT-AL-100-21
<b>Lumen Output</b>	5,460 - 8,060 - 10,660 - 13,260
<b>Wattage</b>	40W - 60W - 80W - 100W
<b>Lumen Efficacy</b>	>130
<b>CCT</b>	3000K - 4000K - 5000K
<b>Beam Angle</b>	T2VS = Type II Very Short T5VS = Type V Very Short
<b>Input Voltage</b>	UNV = Universal 120-277 VAC HV = 347 VAC & 480 VAC
<b>IP Rating</b>	IP65
<b>LED Driver</b>	UL/CUL Listed Constant Current
<b>Certification</b>	ETL, FCC, IES, DLC, LEDLF, RoHS, IDA

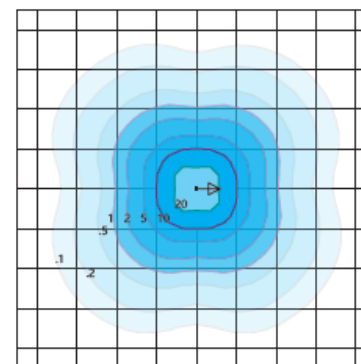
# Product Description

The LOT-AL-40-21 series is an Area post light which replaces halogen style lights in outdoor shopping areas, residential communities, university campuses, and public gardens. The die-cast aluminum housing is IP65 rated for excellent durability and strength. The waterproof housing has proven effective for various weather conditions while the powder-coated finish provides long-term protection against ultraviolet light and chipping. The advanced LED optical system provides horizontal and vertical uniformity, reducing glare while providing excellent lighting control.

## DISTRIBUTION



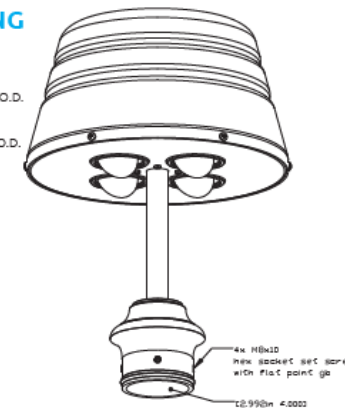
**Type II Short - T2S**  
 Duke Light  
 LED-PT-1201-P-T2S-100-850-UNV  
 Horizontal Footcandles  
 Scale: 1 Mesh = 10 Ft.  
 Light Loss Factor = 1.00  
 Total Lamp Lumens = 13267.13  
 MH = 10.00 Ft, Tilt = 0 Degrees  
 Maximum Calculated Value = 28.64 Fc  
 Arrangement: Single  
 Horizontal Beam Angle (50%): 136.5°  
 Vertical Beam Angle (50%): 79.2°



**Type V Very Short - TSVS (Standard)**  
 Duke Light  
 LED-PT-1201-P-T5VS-100-850-UNV  
 Horizontal Footcandles  
 Scale: 1 Mesh = 10 Ft.  
 Light Loss Factor = 1.00  
 Total Lamp Lumens = 13269.15  
 MH = 10.00 Ft, Tilt = 0 Degrees  
 Maximum Calculated Value = 24.81 Fc  
 Arrangement: Single  
 Horizontal Beam Angle (50%): 114.7°  
 Vertical Beam Angle (50%): 121.5°

## MOUNTING

**Pole Mounted**  
 2.875 inch (73 mm)  
 Max. Diameter Pole O.D.  
 2.375 inch (60 mm)  
 Min. Diameter Pole O.D.



[www.Lightingoftomorrow.com](http://www.Lightingoftomorrow.com)  
 1-800-538-4446