

LED Area Light

LOT-AL-40-6/ LOT-AL-60-6

LOT-AL-80-6/ LOT-AL-100-6

LOT-AL-120-6/ LOT-AL-150-6

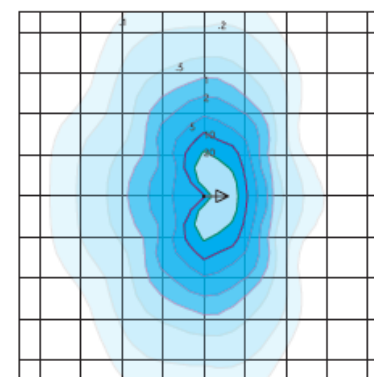


LED Outdoor Area Pole

LOT-AL-40-6/ LOT-AL-60-6
LOT-AL-80-6/ LOT-AL-100-6
LOT-AL-120-6/ LOT-AL-150-6

Product Number	LOT-AL-40-6/ LOT-AL-60-6/ LOT-AL-80-6 LOT-AL-100-6/ LOT-AL-120-6/ LOT-AL-150-6
Lumen Output	4,620 - 6,820 - 9,020 - 11,220 - 13,420 - 16,720
Wattage	40W - 60W - 80W - 100W - 120W - 150 W
Lumen Efficacy	>110
CCT	3000K - 4000K - 5000K
Beam Angle	T2VS = Type II Very Short T5VS = Type V Very Short
Input Voltage	UNV = Universal 120-277 VAC HV = 347 VAC & 480 VAC
IP Rating	IP65
LED Driver	UL/CUL Listed Constant Current
Certification	ETL, FCC, IES, DLC, LEDLF, RoHS, IDA

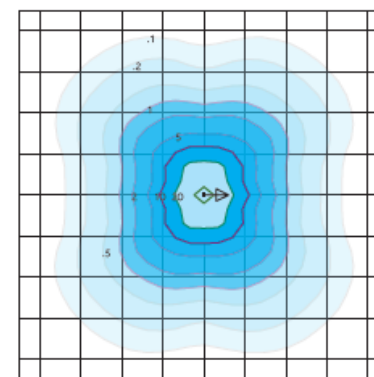
DISTRIBUTION



Type II Short - T2S

Duke Light
LED-PT-612-P-T2S-150-850-UNV

Horizontal Footcandles
Scale: 1 Mesh = 10 Ft.
Light Loss Factor = 1.00
Total Lamp Lumens = 19767.9
MH = 10.00 Ft, Tilt = 0 Degrees
Maximum Calculated Value = 33.22 Fc
Arrangement: Single
Horizontal Beam Angle (50%): 139.1°
Vertical Beam Angle (50%): 76.2°



Type V Very Short - T5VS
(Standard)

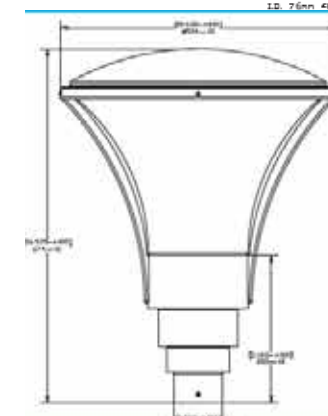
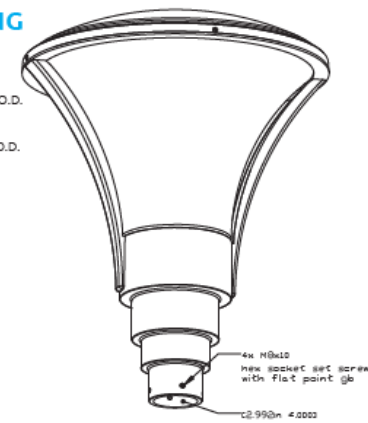
Duke Light
LED-PT-612-P-T5VS-150-850-UNV

Horizontal Footcandles
Scale: 1 Mesh = 10 Ft.
Light Loss Factor = 1.00
Total Lamp Lumens = 19760.93
MH = 10.00 Ft, Tilt = 0 Degrees
Maximum Calculated Value = 27.27 Fc
Arrangement: Single
Horizontal Beam Angle (50%): 116.5°
Vertical Beam Angle (50%): 120.2°

MOUNTING

Pole Mounted

2.875 inch (73 mm)
Max. Diameter Pole O.D.
2.375 inch (60 mm)
Min. Diameter Pole O.D.



Product Description

This outdoor area pole series, LOT-AL-40-6, replaces halogen style lights in outdoor shopping areas, residential communities, university campuses, and public gardens. The die-cast aluminum housing is IP65 rated for excellent durability and strength. The waterproof housing has proven effective for various weather conditions while the powder-coated finish provides long-term protection against ultra-violet light and chipping. The advanced LED optical system provides horizontal and vertical uniformity, reducing glare while providing excellent lighting control.



www.Lightingoftomorrow.com
1-800-538-4446

