

# LED Area Light

LOT-AL-40-7/ LOT-AL-60-7

LOT-AL-80-7/ LOT-AL-100-7

LOT-AL-120-7



# LED Area Fixture

LOT-AL-40-7/ LOT-AL-60-7

LOT-AL-80-7/ LOT-AL-100-7

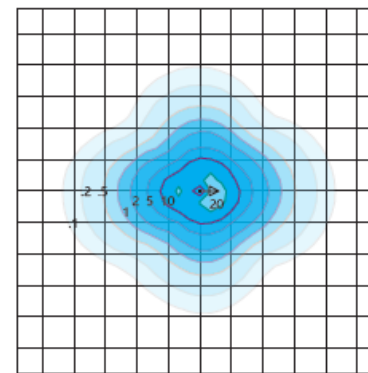
LOT-AL-120-7

<b>Product Number</b>	LOT-AL-40-7/ LOT-AL-60-7/ LOT-AL-80-7 LOT-AL-100-7/ LOT-AL-120-7
<b>Lumen Output</b>	4,620 - 6,820 - 9,020 - 11,220 - 13,420
<b>Wattage</b>	40W - 60W - 80W - 100W - 120W
<b>Lumen Efficacy</b>	>110
<b>CCT</b>	3000K - 4000K - 5000K
<b>Beam Angle</b>	T2VS = Type II Very Short T3VS = Type III Very Short T5VS = Type V Very Short
<b>Input Voltage</b>	UNV = Universal 120-277 VAC HV = 347 VAC & 480 VAC
<b>IP Rating</b>	IP65
<b>LED Driver</b>	UL/CUL Listed Constant Current
<b>Certification</b>	ETL, FCC, IES, DLC, LEDLF, RoHS, IDA

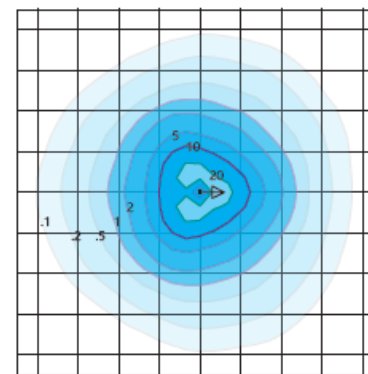
# Product Description

The LOT-AL-40-7 series is often used to replace halogen style lights in residential communities, commercial plazas, city centers, university campuses, and public gardens. This LED area fixture comes with an outdoor-rated LED chip, providing stable color consistency, and the built-in heat sink provides heat management, allowing for a lifespan of over 50,000 hours. Waterproof with die-cast aluminum housing, this LED Decorative Area Light is built for durability. Optional features such as daylight sensor controls are also available.

## DISTRIBUTION



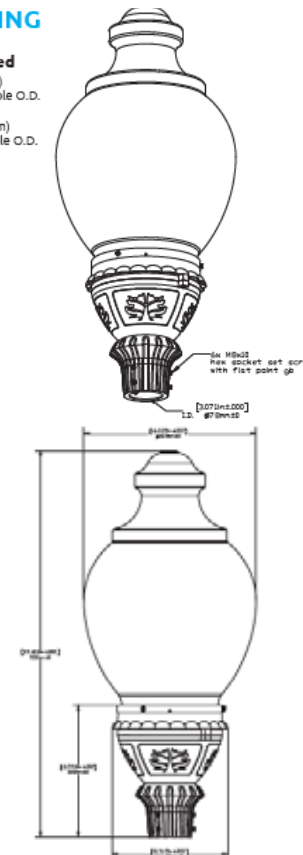
**Type III Very Short - T3VS**  
 Duke Light  
 LED-PT-620-P-T3VS-120-850-UNV  
 Horizontal Footcandles  
 Scale: 1 Mesh = 10 Ft.  
 Light Loss Factor = 1.00  
 Total Lamp Lumens = 15603.43  
 MH = 10.00 Ft, Tilt = 0 Degrees  
 Maximum Calculated Value = 25.32 Fc  
 Arrangement: Single  
 Horizontal Beam Angle (50%): 88.9°  
 Vertical Beam Angle (50%): 132.1°



**Type V Very Short - TSVS (Standard)**  
 Duke Light  
 LED-PT-620-P-TSVS-120-850-UNV  
 Horizontal Footcandles  
 Scale: 1 Mesh = 10 Ft.  
 Light Loss Factor = 1.00  
 Total Lamp Lumens = 15613.9  
 MH = 10.00 Ft, Tilt = 0 Degrees  
 Maximum Calculated Value = 26.06 Fc  
 Arrangement: Single  
 Horizontal Beam Angle (50%): 120.5°  
 Vertical Beam Angle (50%): 106.5°

## MOUNTING

**Pole Mounted**  
 3.00 inch (76 mm)  
 Max. Diameter Pole O.D.  
 2.375 inch (60 mm)  
 Min. Diameter Pole O.D.



[www.LightingofTomorrow.com](http://www.LightingofTomorrow.com)  
 1-800-538-4446