

LED Area Light

LOT-AL-40-8/ LOT-AL-60-8

LOT-AL-80-8/ LOT-AL-100-8

LOT-AL-120-8/ LOT-AL-150-8



LED Pole Fixture

LOT-AL-40-8/ LOT-AL-60-8

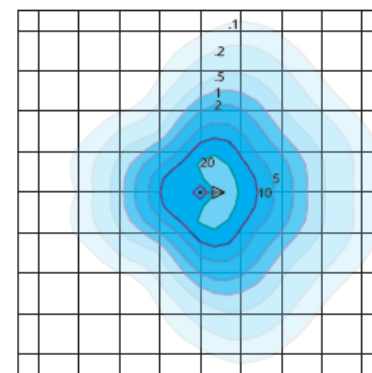
LOT-AL-80-8/ LOT-AL-100-8

LOT-AL-120-8/ LOT-AL-150-8

Product Number	LOT-AL-40-8/ LOT-AL-60-8/ LOT-AL-80-8 LOT-AL-100-8/ LOT-AL-120-8/ LOT-AL-150-8
Lumen Output	4,620 - 6,820 - 9,020 - 11,220 - 13,420 - 16,720
Wattage	40W - 60W - 80W - 100W - 120W - 150W
Lumen Efficacy	>110
CCT	3000K - 4000K - 5000K
Beam Angle	T2VS = Type II Very Short T3VS = Type III Very Short T5VS = Type V Very Short
Input Voltage	UNV = Universal 120-277 VAC HV = 347 VAC & 480 VAC
IP Rating	IP65
LED Driver	UL/CUL Listed Constant Current
Certification	ETL, FCC, IES, DLC, LEDLF, RoHS, IDA

The LOT-AL-40-8 series is an excellent light for both commercial and residential properties. Designed for superior photometric performance and architectural appeal, this LED Pole Fixture comes equipped with a rated LED chip and advanced optical system providing stable color consistency, energy efficiency, reduced glare, and excellent light quality. IP65 rated housing provides excellent strength and durability for multiple weather conditions. This series has a lifespan of over 50,000 hours and a 5-year manufacturer warranty.

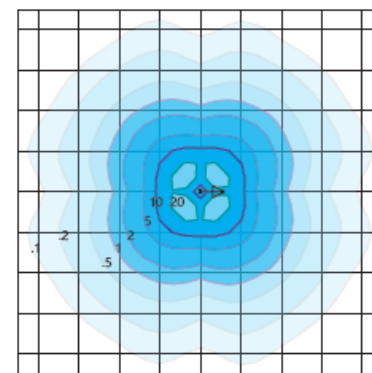
DISTRIBUTION



Type III Short - T3S

Duke Light
LED-PT-630-P-T3S-150-850-UNV

Horizontal Footcandles
Scale: 1 Mesh = 10 Ft.
Light Loss Factor = 1.00
Total Lamp Lumens = 19767.3
MH = 10.00 Ft, Tilt = 0 Degrees
Maximum Calculated Value = 27.92 Fc
Arrangement: Single
Horizontal Beam Angle (50%): 124.6°
Vertical Beam Angle (50%): 68.2°



Type V Very Short - TSVS (Standard)

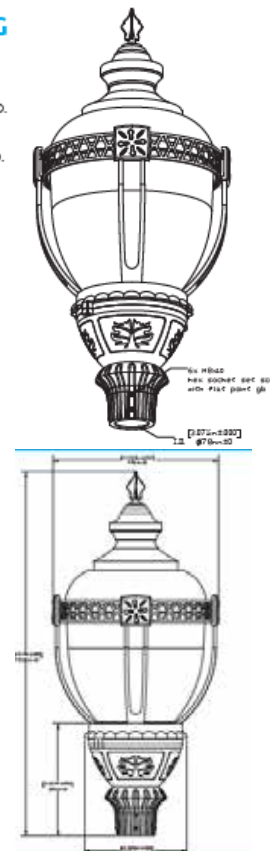
Duke Light
LED-PT-630-P-TSVS-150-850-UNV

Horizontal Footcandles
Scale: 1 Mesh = 10 Ft.
Light Loss Factor = 1.00
Total Lamp Lumens = 19765.17
MH = 10.00 Ft, Tilt = 0 Degrees
Maximum Calculated Value = 24.71 Fc
Arrangement: Single
Horizontal Beam Angle (50%): 112.7°
Vertical Beam Angle (50%): 123.4°

MOUNTING

Pole Mounted
3.00 inch (76 mm)
Max. Diameter Pole O.D.

2.375 inch (60 mm)
Min. Diameter Pole O.D.



www.Lightingoftomorrow.com
1 - 800 - 538 - 4446

