

# LED Area Light

LOT-AL-40-9/ LOT-AL-60-9

LOT-AL-80-9/ LOT-AL-100-9

LOT-AL-120-9/ LOT-AL-150-9



# LED Post Fixture

LOT-AL-40-9/ LOT-AL-60-9

LOT-AL-80-9/ LOT-AL-100-9

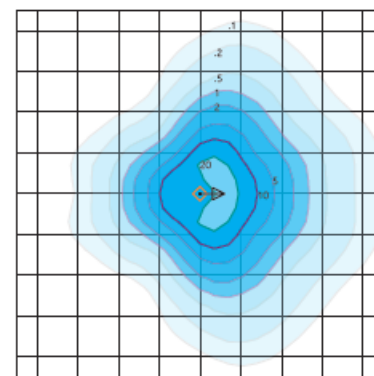
LOT-AL-120-9/ LOT-AL-150-9

Product Number	LOT-AL-40-9/ LOT-AL-60-9/ LOT-AL-80-9 LOT-AL-100-9/ LOT-AL-120-9/ LOT-AL-150-9
Lumen Output	4,620 - 6,820 - 9,020 - 11,220 - 13,420 - 16,720
Wattage	40W - 60W - 80W - 100W - 120W - 150W
Lumen Efficacy	>110
CCT	3000K - 4000K - 5000K
Beam Angle	T2VS = Type II Very Short T3VS = Type III Very Short T5VS = Type V Very Short
Input Voltage	UNV = Universal 120-277 VAC HV = 347 VAC & 480 VAC
IP Rating	IP65
LED Driver	UL/CUL Listed Constant Current
Certification	ETL, FCC, IES, DLC, LEDLF, RoHS, IDA

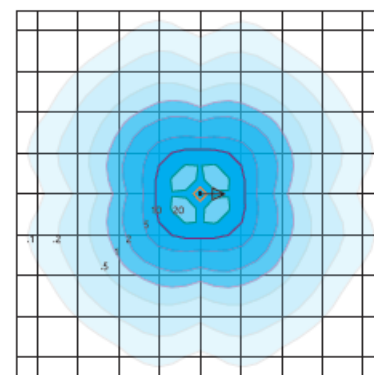
# Product Description

The LOT-AL-40-9 series is a fantastic LED outdoor lighting choice for parking lots, retail properties, and community associations. This LED post fixture offers excellent energy efficiency and light quality with reduced glare. The optical glass lens technology effectively aims the light where you need it, while eliminating the unsightly shadow circles commonly seen under other LED post top fixtures. An enduring powder coated finish provides long-term protection against ultraviolet light and chipping. Motion sensor and dimming options available.

## DISTRIBUTION



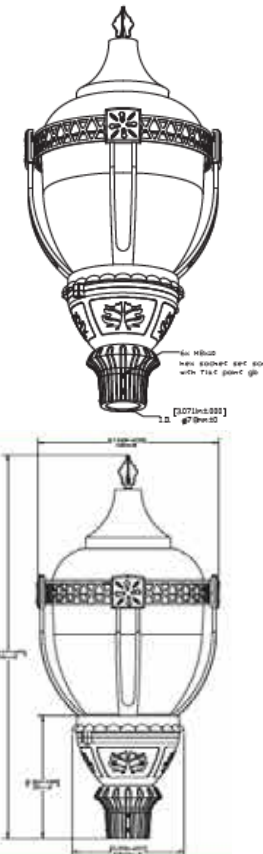
Type III Short - T3S  
Duke Light  
LED-PT-631-P-T3S-150-850-UNV  
Horizontal Footcandles  
Scale: 1 Mesh = 10 Ft.  
Light Loss Factor = 1.00  
Total Lamp Lumens = 19763.9  
MH = 10.00 Ft, Tilt = 0 Degrees  
Maximum Calculated Value = 27.99 Fc  
Arrangement: Single  
Horizontal Beam Angle (50%): 124.7°  
Vertical Beam Angle (50%): 67.9°



Type V Very Short - TSVS (Standard)  
Duke Light  
LED-PT-631-P-TSVS-150-850-UNV  
Horizontal Footcandles  
Scale: 1 Mesh = 10 Ft.  
Light Loss Factor = 1.00  
Total Lamp Lumens = 19766.5  
MH = 10.00 Ft, Tilt = 0 Degrees  
Maximum Calculated Value = 24.91 Fc  
Arrangement: Single  
Horizontal Beam Angle (50%): 112.9°  
Vertical Beam Angle (50%): 123.4°

## MOUNTING

**Pole Mounted**  
3.00 inch (76 mm)  
Max. Diameter Pole O.D.  
2.375 inch (60 mm)  
Min. Diameter Pole O.D.



[www.LightingofTomorrow.com](http://www.LightingofTomorrow.com)  
1-800-538-4446

