

LED Dual Direction Suspended Light

LOT-LL-25-19/LOT-LL-40-19

LOT-LL-80-19

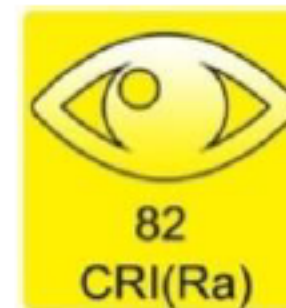


LED Dual Direction Suspended Light

LOT-LL-25-19/LOT-LL-40-19

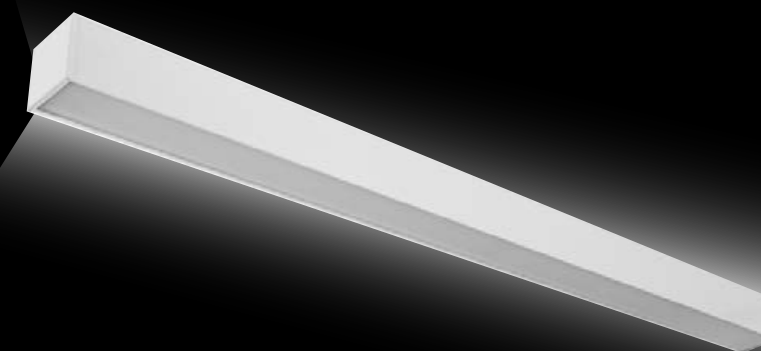
LOT-LL-80-19

Product Number	LOT-LL-25-19/LOT-LL-40-19/LOT-LL-80-19
Lumen Output	3,125 - 5,000 - 10,000
Wattage	25W - 40W - 80W
Lumen Efficacy	125lm/w
CCT	3000K - 4000K - 5000K
Dimensions	23 7/8" x 46 2/8" x 91 1/8" x 2 6/8" x 3 1/8"
Input Voltage	UNV = Universal 120-277 VAC HV = 347 VAC & 480 VAC
IP Rating	No Rating
LED Driver	Class II driver, with 0-10V or triac dimming
Certification	UL, DLC, FCC, ISO



Product Description

The LED Dual-Direction Suspended Light is an excellent option for restaurants, hotels, schools, offices, commercial businesses, public buildings, and hallway lighting. This ceiling fixture is designed to be suspended, providing both up and down lighting, yet it can also be surface mounted or recessed into the ceiling. Available in a variety of wattages, this light provides an instant-on, even wash of light with a wide angle and glare reduction. Finished with a high-quality enamel, this light yields excellent reflection while the high quality LED chips maintain efficiency, heat dissipation, stability, and lumen output. The product contains a built-in surge protector and class II driver with 0-10V or Triac dimming and a lifetime of 50,000 hours. Optional features such as dimming options and interchangeable color options are also available.



www.Lightingoftomorrow.com
1-800-538-4446