

Flood Light

RGB LED Flood Light



IP65
5
WARRANTY



LED RGB Linear Flood Light

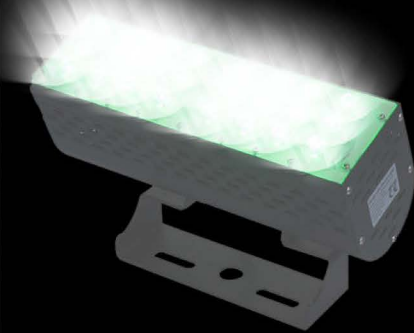
Part Number	LOT-WW-30-2	LOT-WW50-2	LOT-WW-100-2	LOT-WW150-2	LOT-WW-200-2
Lumen Output	3,450lm	5,750lm	11,500lm	17,250lm	23,000lm
Wattage	30W	50W	100W	150W	200W
Lumen Efficacy	115lm/W				
CCT	4500~5500K(2500~5500K optional)				
Beam Angle	15°, 25°, 40°, 60°				
Input Voltage	100-277Vac 47-63Hz PF 0.95				
IP Rating	IP 66				
LED Driver	Meanwell				
Certification	UL, CE, PSE, SAA, RoHS				

Details



LED Technology

The LED RGB Linear Flood Light Series can deliver the perfect glare-free lighting for various indoor and outdoor locations such as exhibit centers, malls, plazas, offices, lobbies and supermarkets. This flood light has a patented design that allows for excellent heat dissipation, maximizing its lifespan. This product has a protection rating of IP65 so it is both waterproof and perfect for outdoor application. This flood light has a wide radiation angle, allowing it to light a huge area. It also has an anti-glare function so the light it emits is not only bright, but also pleasant to the eyes. This product is UV-free and has no mercury and lead components for safe lighting.



www.lightingoftomorrow.com
1-800-538-4446

